



2019





# ***OUR PASSION FOR FISHING IS OBVIOUS...***

## ***EVERYONE AT PHOENIX HAS A PASSION FOR BASS FISHING***

From our President, to our salesmen, to our craftsmen who build the boats, we all live to fish. Whether it is Bassmaster events and weekend tournaments or spending time fishing with our family and friends, we truly love the sport. This passion has shaped our lives and it has likewise brought about many of the fishing features that you see on the Phoenix today. Our goal is to make every boat that goes out our door the best fishing platform it can be, in both design and construction, for our customers. We love to fish as much as anyone and we believe it shows in every boat we build.



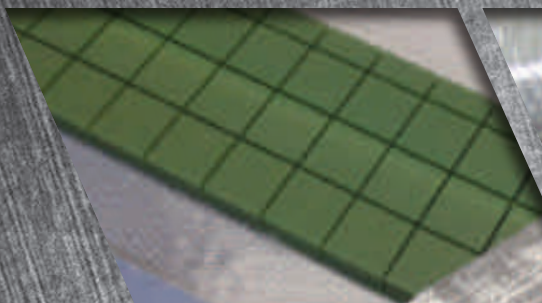
*Gary Clouse, President, Phoenix Boats, Bassmaster Elite Series Pro*



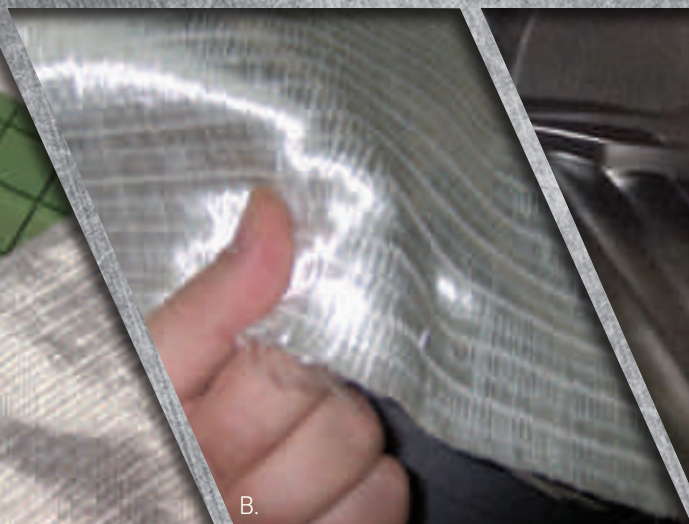




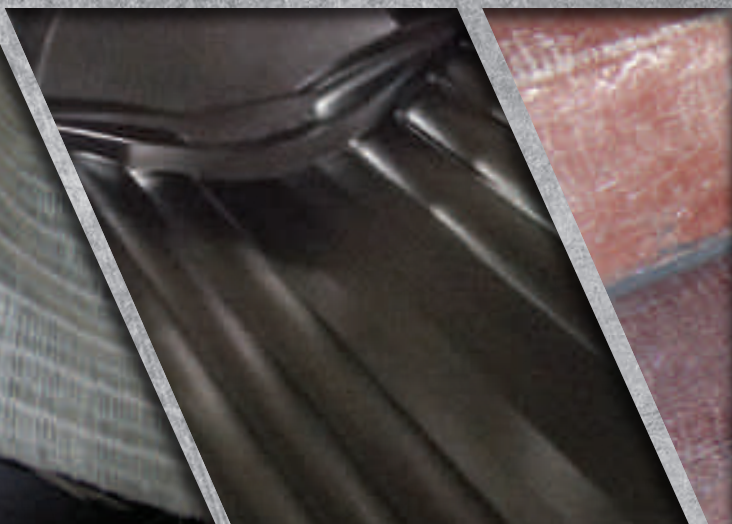




A.

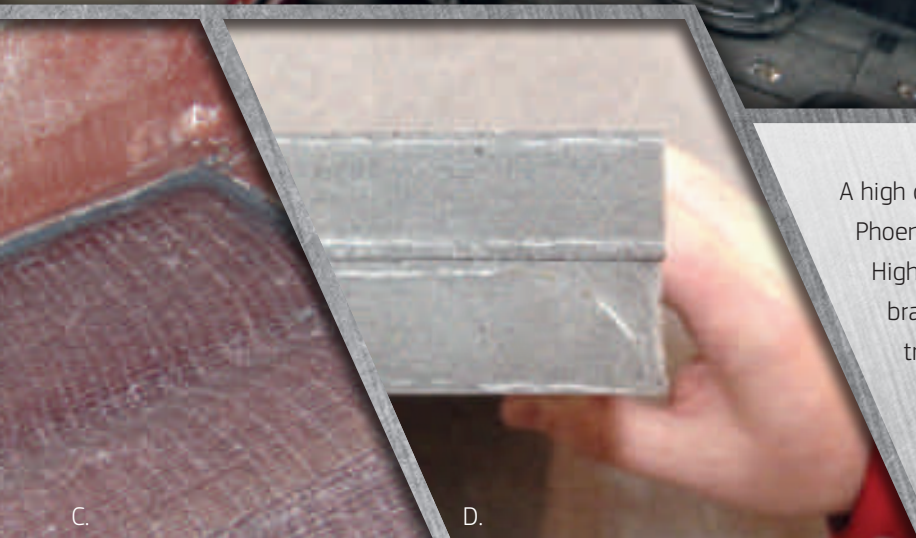


B.





# ***BETTER MATERIALS. BETTER CRAFTSMANSHIP. BETTER BOATS.***



A high quality boat cannot be built without high quality materials. At Phoenix, we buy the best raw materials and components available. High quality resins, knit-type fiberglass cloths (a and b), and Plexus brand adhesives to bond the stringer (c), Coosa Composite in our transom (d), and Trevira cloths for superior screw retention are the materials that make Phoenix different than others. Before you choose a boat, you owe it to yourself to compare the complete package of quality materials, craftsmanship, fishability and performance. We believe it will be hard to find a better choice!





*"My 21 PHX Tackle Storage helps me to stay organized and focused when the clock starts on tournament day. From the first cast to lines out it helps me maximize my time on the water."*

Aaron Martens, MLF Bass Pro Tour,  
Bassmaster Classic Qualifier and Two Time Angler of the Year Winner

## FEATURES

- All Composite Construction Incl. Transom & Stringers
- Hydraulic Tilt Steering
- Custom Steering Wheel
- 12" Adjustable Jack Plate
- Trim At The Helm
- Hot Foot Throttle W/ Adj. Slide
- Lowrance HDS 9 Live Flush In Bow
- Lowrance HDS 12 Live Flush In Console
- Lowrance NMEA Harness w/ Point 1 Antenna
- Lowrance Active Image
- Lowrance Ethernet Cord
- Full Instrumentation
- Passenger Rod Box // Ramp
- Recessed Trolling Motor Foot Pedal
- Auxiliary Power Outlet
- USB Power Outlet
- Passenger Grab Handle & Foot Rest/Brace
- Rod Buckles
- LED Courtesy Lights
- LED Compartment Lights
- Snake Light
- Port Side Rod Organizer
- Stainless Phoenix Logo Package
- Console Storage Box with Cup Holders
- 1 Fold Down Seat / 1 Bike Seat & Power Pro Pole
- Custom Cover
- Day Box in Front of Drivers Console
- Center Rod Storage
- Pro Tech Padded Deck
- Phoenix Culling System
- Phoenix Integrated Wiring System
- Under Seat Net Storage
- Drop in Rear Trays
- LED Navigation Lights
- Stainless Steel Lid Assist
- Minn Kota Fortrex 112 36v 45"
- 4 x 10 Battery Charger
- Livewell Recirculation System
- Livewell Pump Out System
- LED Livewell Lights
- Two 1100 GPH Auto Bilge Pump
- Stainless Steel Pull Up Cleats
- Stainless Slam Latches
- Stainless Trim on Tool Holders
- Tandem Axle Trailer w/ Disc Brakes
- Gator Hyde Finish
- Aluminum Step Pads
- Custom Aluminum Wheels w/ Radial Tires
- Ratchet Tie Downs
- Lazer cut "Phoenix" Step Pads
- OEM Grade Vault Hybrid Lubrication System
- Bow Step Pads
- Swing Tongue
- Matching spare
- LED Trailer Lights
- F2 Jack & Wench

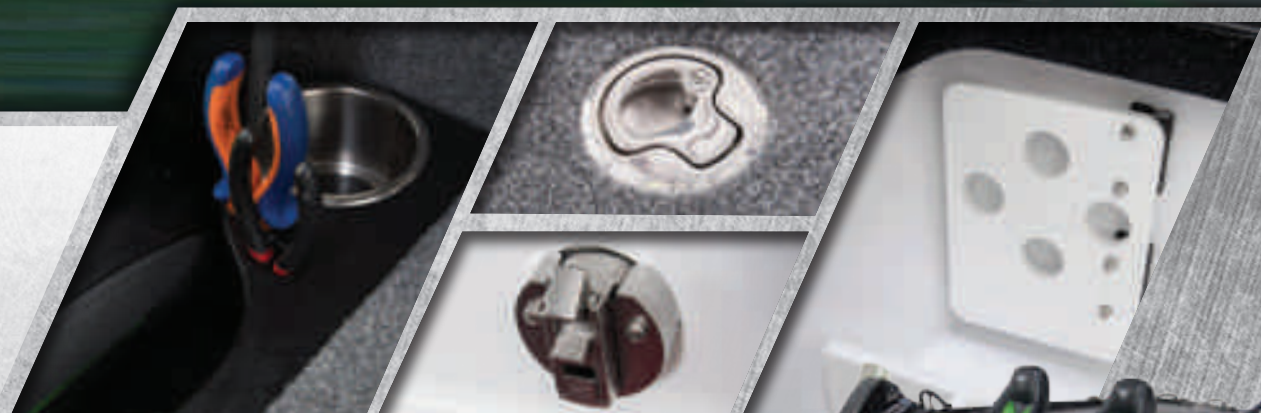


# 21 PHX

LENGTH 21' 6" | BEAM 96" | FUEL CAPACITY 50 GAL. | MAX HP 200-250 HP  
WEIGHT (APPROX) 1950 LBS. | LIVEWELL CAP 44 GAL.

## A WHOLE NEW LEVEL OF PERFORMANCE & FISHABILITY

The deck layout includes a massive center storage box with built in rod storage to ensure anglers maximum efficiency on the water. We have included a day box in front of the driver's console to allow for quick access to your favorite baits. The all new driver's console and bow shroud have been designed to accommodate larger graphs flush mounted. All of these new features built on the foundation that Elite level anglers have come to know and trust equals the finest fishing platform available today.





# 20 PHX

LENGTH 20' 6" | BEAM 96" | FUEL CAPACITY 50 GAL. | MAX HP 200-250 HP  
WEIGHT (APPROX) 1950 LBS. | LIVEWELL CAP 44 GAL.

## IT TAKES PASSION TO PRODUCE THE FINEST FISHING PLATFORM AVAILABLE

The 20 PHX is based on the same platform of the 21 PHX that professional anglers trust to get them through the roughest of conditions. It offers the same deck layout as the larger platform with the massive center tackle storage box and incorporated center rod storage along with the day box built in to the front deck. The bow shroud is offset for better graph visibility and to accommodate larger flush mount units. All of these features combined with the shorter platform offer you the best in rough water ride and the ability to get you to the secret fishing spot a little quicker.







"The 20 PHX is the perfect blend of speed and comfort allowing me to perform at my highest level."

Randall Tharp, MLF Bass Pro Tour,  
Bassmaster Classic Qualifier

## FEATURES

- All Composite Construction Incl. Transom & Stringers
- Hydraulic Tilt Steering
- Custom Steering Wheel
- 10" Adjustable Jack Plate
- Trim At The Helm
- Hot Foot Throttle W/ Adj. Slide
- Lowrance HDS 9 Live Flush In Bow
- Lowrance HDS 12 Live Flush In Console
- Lowrance NMEA Harness w/ Point 1 Antenna
- Lowrance Active Image
- Lowrance Ethernet Cord
- Full Instrumentation
- Passenger Rod Box / Ramp
- Recessed Trolling Motor Foot Pedal
- Auxiliary Power Outlet
- USB Power Outlet
- Passenger Grab Handle & Foot Rest/Brace
- Rod Buckles
- LED Courtesy Lights
- LED Compartment Lights
- Snake Light
- Port Side Rod Organizer
- Stainless Phoenix Logo Package
- Console Storage Box with Cup Holders
- 1 Fold Down Seat / 1 Bike Seat & Power Pro Pole
- Custom Cover
- Day Box in Front of Drivers Console
- Center Rod Storage
- Pro Tech Padded Deck
- Phoenix Culling System
- Phoenix Integrated Wiring System
- Under Seat Net Storage
- Drop in Rear Trays
- LED Navigation Lights
- Stainless Steel Lid Assist
- Minn Kota Fortrex 112 36v 45"
- 4 x 10 Battery Charger
- Livewell Recirculation System
- Livewell Pump Out System
- LED Livewell Lights
- Two 1100 GPH Auto Bilge Pump
- Stainless Steel Pull Up Cleats
- Stainless Slam Latches
- Stainless Trim on Tool Holders
- Tandem Axle Trailer w/ Disc Brakes
- Gator Hyde Finish
- Aluminum Step Pads
- Custom Aluminum Wheels w/ Radial Tires
- Ratchet Tie Downs
- Lazer cut "Phoenix" Step Pads
- OEM Grade Vault Hybrid Lubrication System
- Bow Step Pads
- Swing Tongue
- Matching spare
- LED Trailer Lights
- F2 Jack & Wench





## FEATURES

- All Composite Construction Incl. Transom & Stringers
- Hydraulic Tilt Steering
- Custom Steering Wheel
- 10" Adjustable Jack Plate
- Trim At The Helm
- Hot Foot Throttle W/ Adj. Slide
- Lowrance HDS 9 Live Flush In Bow
- Lowrance HDS 12 Live Flush In Console
- Lowrance NMEA Harness w/ Point 1 Antenna
- Lowrance Active Image
- Lowrance Ethernet Cord
- Full Instrumentation
- Passenger Rod Box // Ramp
- Recessed Trolling Motor Foot Pedal
- Auxiliary Power Outlet
- USB Power Outlet
- Passenger Grab Handle & Foot Rest/ Brace
- Rod Buckles
- LED Courtesy Lights
- LED Compartment Lights
- Snake Light
- Port Side Rod Organizer
- Stainless Phoenix Logo Package
- Console Storage Box with cup holders
- 1 Fold Down Seat / 1 Bike Seat & Power Pro Pole
- Custom Cover
- Day Box in Front of Drivers Console
- Center Rod Storage
- Pro Tech Padded Deck
- Phoenix Culling System
- Phoenix Integrated Wiring System
- Under Seat Net Storage
- Drop in Rear Trays
- LED Navigation Lights
- Stainless Steel Lid Assist
- Minn Kota Fortrex 80 24v 45"
- 3 x 10 Battery Charger
- Livewell Recirculation System
- Livewell Pump Out System
- LED Livewell Lights
- Two 1100 GPH Auto Bilge Pump
- Stainless Steel Pull Up Cleats
- Stainless Slam Latches
- Stainless Trim on Tool Holders
- Tandem Axle Trailer w/ Disc Brakes
- Gator Hyde Finish
- Aluminum Step Pads
- Custom Aluminum Wheels w/ Radial Tires
- Ratchet Tie Downs
- Lazer cut "Phoenix" Step Pads
- OEM Grade Vault Hybrid Lubrication System
- Bow Step Pads
- Swing Tongue
- Matching spare
- LED Trailer Lights
- F2 Jack & Wench



# 19 PHX

LENGTH 19' 8" | BEAM 96" | FUEL CAPACITY 43 GAL. | MAX HP 200-225 HP  
WEIGHT (APPROX) 1800 LBS. | LIVEWELL CAP 40 GAL.

## ***THE PHOENIX 19 PHX IS THE NEWEST ADDITION TO THE PHOENIX LINEUP***

*The all-new 19 PHX is based along the same platform and deck layout of the 20 and 21 PHX, that touring pros and weekend warriors have trusted to handle whatever nature has thrown at them. Utilizing the same slam style latches as the other PHX models and all of the same fishing features it is a truly a tournament platform on a smaller scale. The drivers console and cockpit are mirrored after the bigger models to give you plenty of space and comfort as you drive to the next honey hole.*





# 921 PRO XP

LENGTH 21' 6" | BEAM 96" | FUEL CAPACITY 50 GAL.  
MAX HP 200-250 HP | WEIGHT (APPROX) 1950 LBS. | LIVEWELL CAP 44 GAL.

## FISHERMEN-FRIENDLY LAYOUT ON THE BEST HANDLING HULL IN THE INDUSTRY

The 921 Pro XP is meticulously designed to give you the best fishing platform in the industry. Through the incorporation of the patented Diamond Vee hull design, we have produced the softest, driest, best handling hull design in the industry. The fishermen-friendly layout includes a rod storage rack capable of holding twelve 8' rods as well as spacious tackle storage. The performance and comfort are as big as the enormous front deck. The 921 Pro XP is the limousine of the bass boat world!



<sup>1</sup> Optional Dual Unit Dash Mount Shroud

<sup>2</sup> Optional Gimbal Mount to Bow Shroud







"My 921 Pro XP is the perfect tool to help me to perform at my highest level. From winning the AOY in 2018 to the final call for lines out this season, my 921 is the finest fishing platform I have ever used."

Justin Lucas, MLF Bass Pro Tour and Bassmaster Classic Qualifier and 2018 Bassmaster Elite Angler of the Year

## FEATURES

- All Composite Construction Incl. Transom & Stringers
- Hydraulic Tilt Steering
- Custom Steering Wheel
- 12" Adjustable Jack Plate
- Trim At The Helm
- Hot Foot Throttle W/ Adj. Slide
- Lowrance HDS 7 Live Flush In Bow
- Lowrance HDS 9 Live Flush In Console
- Lowrance NMEA Harness w/ Point 1 Antenna
- Lowrance Active Image
- Lowrance Ethernet Cord
- Full Instrumentation
- Passenger Rod Box / Ramp
- Recessed Trolling Motor Foot Pedal
- Auxiliary Power Outlet
- USB Power Outlet
- Passenger Grab Handle & Foot Rest/Brace
- Rod Buckles
- LED Courtesy Lights
- LED Compartment Lights
- Snake Light
- Port Side Rod Organizer
- Stainless Phoenix Logo Package
- Console Storage Box with cup holders
- 1 Fold Down Seat / 1 Bike Seat & Power Pro Pole
- Custom Cover
- Drop in Rear Storage Trays
- Phoenix Culling System
- Phoenix Integrated Wiring System
- Under Seat Net Storage
- Tool Holder in Bow
- LED Navigation Lights
- Stainless Steel Lid Assist
- Minn Kota Fortrex 112 36v 45"
- 4 x 10 Battery Charger
- Livewell Recirculation System
- Livewell Pump Out System
- LED Livewell Lights
- Two 1100 GPH Auto Bilge Pump
- Stainless Steel Pull Up Cleats
- Stainless Locking Latches
- Tandem Axle Trailer w/ Disc Brakes
- Gator Hyde Finish
- Aluminum Step Pads
- Custom Aluminum Wheels w/ Radial Tires
- Ratchet Tie Downs
- Lazer cut "Phoenix" Step Pads
- OEM Grade Vault Hybrid Lubrication System
- Bow Step Pads
- Swing Tongue
- Matching spare
- LED Trailer Lights
- F2 Jack & Wench





*"The quality construction and performance of my 920 Pro XP provides me the luxury of only having to worry about catching fish when I'm on the water."*

Bobby Lane, MLF Bass Pro Tour, and Bassmaster Classic Qualifier

## FEATURES

- All Composite Construction Incl. Transom & Stringers
- Hydraulic Tilt Steering
- Custom Steering Wheel
- 10" Adjustable Jack Plate
- Trim At The Helm
- Hot Foot Throttle W/ Adj. Slide
- Lowrance HDS 7 Live Flush In Bow
- Lowrance HDS 9 Live Flush In Console
- Lowrance NMEA Harness w/ Point 1 Antenna
- Lowrance Active Image
- Lowrance Ethernet Cord
- Full Instrumentation
- Passenger Rod Box // Ramp
- Recessed Trolling Motor Foot Pedal
- Auxiliary Power Outlet
- USB Power Outlet
- Passenger Grab Handle & Foot Rest/Brace
- Rod Buckles
- LED Courtesy Lights
- LED Compartment Lights
- Snake Light
- Port Side Rod Organizer
- Stainless Phoenix Logo Package
- Console Storage Box with cup holders
- 1 Fold Down Seat / 1 Bike Seat & Power Pro Pole
- Custom Cover
- Drop in Rear Storage Trays
- Phoenix Culling System
- Phoenix Integrated Wiring System
- Under Seat Net Storage
- Tool Holder in Bow
- LED Navigation Lights
- Stainless Steel Lid Assist
- Minn Kota Fortrex 112 36v 45"
- 4 x 10 Battery Charger
- Livewell Recirculation System
- Livewell Pump Out System
- LED Livewell Lights
- Two 1100 GPH Auto Bilge Pump
- Stainless Steel Pull Up Cleats
- Stainless Locking Latches
- Tandem Axle Trailer w/ Disc Brakes
- Gator Hyde Finish
- Aluminum Step Pads
- Custom Aluminum Wheels w/ Radial Tires
- Ratchet Tie Downs
- Lazer cut "Phoenix" Step Pads
- OEM Grade Vault Hybrid Lubrication System
- Bow Step Pads
- Swing Tongue
- Matching spare
- LED Trailer Lights
- F2 Jack & Wench



# 920 PRO XP

LENGTH 20' 6" | BEAM 96" | FUEL CAPACITY 50 GAL.  
MAX HP 200-250 HP | WEIGHT (APPROX) 1850 LBS. | LIVEWELL CAP 44 GAL.

## ***BIG AND FAST HAVE NEVER TRULY BEEN ACHIEVED UNTIL NOW...***

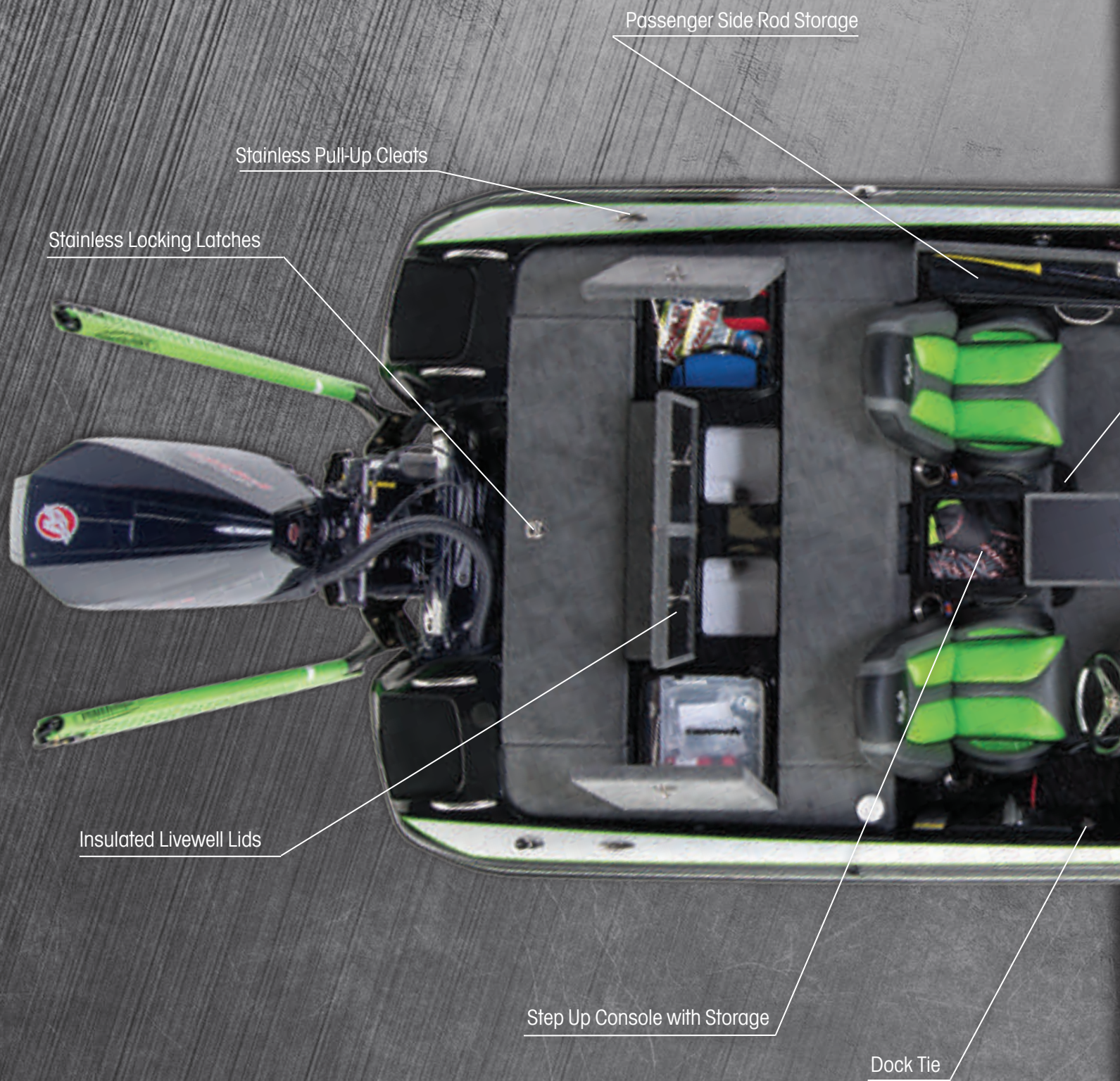
*The Phoenix 920 Pro XP is the closest thing to perfection on the water today. It's as wide as the 921, and one foot shorter. It gives you the width, storage, and comfort that you expect in a big boat along with the speed, handling, and maneuverability of a 20-footer. Combine all of this with industry-best standard features such as stainless-steel hardware, integrated net storage, and the capability to flush-mount big screen electronics and you have a head-turning, boat-passing, bass-catching machine!*



Optional Deck  
Lighting Kit







Passenger Side Rod Storage

Stainless Pull-Up Cleats

Stainless Locking Latches

Insulated Livewell Lids

Step Up Console with Storage

Dock Tie





Under-Seat Net Storage



Large Flush Mount Electronics

Tackle System



Custom Cover standard on all models



# 919 PRO XP

LENGTH 19' 8" | BEAM 96" | FUEL CAPACITY 43 GAL.  
MAX HP 200-225 HP | WEIGHT (APPROX) 1800 LBS. | LIVEWELL CAP 40 GAL.

## OUR WIDE BEAM CREATES A SPACIOUS CASTING DECK

At 19'8" with a 96" beam and wide front casting deck, this model is being talked about! Lowrance HDS 9 Live and HDS 7 Live with Active Image, tandem trailer with gatorhyde finish, are all standard! Couple this with a 225HP motor and you will have a great tournament rig!







## FEATURES

- All Composite Construction Incl. Transom & Stringers
- Hydraulic Tilt Steering
- Custom Steering Wheel
- 10" Adjustable Jack Plate
- Trim At The Helm
- Hot Foot Throttle W/ Adj. Slide
- Lowrance HDS 7 Live Flush In Bow
- Lowrance HDS 9 Live Flush In Console
- Lowrance NMEA Harness w/ Point 1 Antenna
- Lowrance Active Image
- Lowrance Ethernet Cord
- Full Instrumentation
- Passenger Rod Box / Ramp
- Recessed Trolling Motor Foot Pedal
- Auxiliary Power Outlet
- USB Power Outlet
- Passenger Grab Handle & Foot Rest/Brace
- Rod Buckles
- LED Courtesy Lights
- LED Compartment Lights
- Snake Light
- Port Side Rod Organizer
- Stainless Phoenix Logo Package
- Console Storage Box with cup holders
- 1 Fold Down Seat / 1 Bike Seat & Power Pro Pole
- Custom Cover
- Drop in Rear Storage Trays
- Phoenix Culling System
- Phoenix Integrated Wiring System
- Under Seat Net Storage
- Tool Holder in Bow
- LED Navigation Lights
- Stainless Steel Lid Assist
- Minn Kota Fortrex 80 24v 45"
- 3 x 10 Battery Charger
- Livewell Recirculation System
- Livewell Pump Out System
- LED Livewell Lights
- Two 1100 GPH Auto Bilge Pump
- Stainless Steel Pull Up Cleats
- Stainless Locking Latches
- Tandem Axle Trailer w/ Disc Brakes
- Gator Hyde Finish
- Aluminum Step Pads
- Custom Aluminum Wheels w/ Radial Tires
- Ratchet Tie Downs
- Lazer cut "Phoenix" Step Pads
- OEM Grade Vault Hybrid Lubrication System
- Bow Step Pads
- Swing Tongue
- Matching spare
- LED Trailer Lights
- F2 Jack & Wench





"I'm going to be honest with you, my 721 Pro XP is the perfect combination of speed, agility, rough water ride, deck height, and stability. I believe it is the finest fishing platform available today!"

Greg Hackney, MLF Bass Pro Tour, Bassmaster Classic Qualifier  
and 2014 Bassmaster Angler of the Year

## FEATURES

- All Composite Construction Incl. Transom & Stringers
- Hydraulic Tilt Steering
- Custom Steering Wheel
- 10" Adjustable Jack Plate
- Trim At The Helm
- Hot Foot Throttle W/ Adj. Slide
- Lowrance Hook<sup>2</sup> 7 Flush in Bow
- Lowrance Hook<sup>2</sup> 7 Flush in Console
- Full Instrumentation
- Passenger Rod Box / Ramp
- Recessed Trolling Motor Foot Pedal
- Auxiliary Power Outlet
- USB Power Outlet
- Passenger Grab Handle & Foot Rest/Brace
- Rod Buckles
- LED Courtesy Lights
- LED Compartment Lights
- Snake Light
- Port Side Rod Organizer
- Console Storage Box with cup holders
- 1 Fold Down Seat / 1 Bike Seat & Power Pro Pole
- Custom Cover
- Under Seat Net Storage
- Stainless Steel Lid Assist
- Minn Kota Fortrex 80 24v 45"
- 3 x 10 Battery Charger
- Drop In Rear Trays
- Livewell Recirculation System
- Livewell Pump Out System
- LED Livewell Lights
- 1100 GPH Auto Bilge Pump
- Stainless Steel Pull Up Cleats
- Stainless Locking Latches
- LED Navigation Lights
- Tandem Axle Trailer w/ Disc Brakes
- Gator Hyde Finish
- Aluminum Step Pads
- Custom Aluminum Wheels w/ Radial Tires
- Ratchet Tie Downs
- Lazer cut "Phoenix" Step Pads
- OEM Grade Vault Hybrid Lubrication System
- Bow Step Pads
- Swing Tongue
- Matching spare
- LED Trailer Lights



# 721 PRO XP

LENGTH 20' 11" | BEAM 96" | FUEL CAPACITY 50 GAL.  
MAX HP 200-250 HP | WEIGHT (APPROX) 1850 LBS. | LIVEWELL CAP 44 GAL.

## PERFORMANCE, SPEED & FISHABILITY...

The model that anglers have come to know for over a decade as one of the finest fishing platforms in the industry. Featuring a larger console to be able to flush mount bigger graphs and a revolutionary new bow shroud design. The front deck is elevated to allow for better pitching and flipping making it a great bass catching machine.





# 819 PRO

LENGTH 19' 8" | BEAM 96" | FUEL CAPACITY 43 GAL. | MAX HP 200 HP  
WEIGHT (APPROX) 1800 LBS. | LIVEWELL CAP 40 GAL.

## ***GREAT FISHING PLATFORM AT AN AFFORDABLE PRICE***

*The Phoenix 819 Pro is one of the best values in the Phoenix family. A wide front deck and large rear deck make it a great fishing platform at an affordable price. This boat comes standard with a custom cover, 10" jackplate and custom wheels. Whether you fish tournaments or just love to fish, you can do it with this boat!*







## FEATURES

- All Composite Construction Incl. Transom & Stringers
- Hydraulic Tilt Steering
- Custom Steering Wheel
- 10" Adjustable Jack Plate
- Trim At The Helm
- Hot Foot Throttle W/ Slide
- Lowrance Hook<sup>2</sup> 5X Flush in Bow
- Lowrance Hook<sup>2</sup> 5 Flush in Console
- Full Instrumentation
- Passenger Rod Box / Ramp
- Recessed Trolling Motor Foot Pedal
- Auxiliary Power Outlet
- USB Power Outlet
- Passenger Grab Handle & Foot Rest/Brace
- Rod Buckles
- Snake Light
- LED Courtesy Lights
- Port Side Rod Organizer
- 1 Fold Down Seat / 1 Bike Seat & Power Pro Pole
- Under Seat Net Storage
- Custom Cover
- LED Navigation Lights
- LED Compartment Lights
- Stainless Steel Lid Assist
- Minn Kota Max 70 SC 24v
- 2 x 10 Battery Charger
- Console Storage Box with cup holders
- LED Livewell Lights
- Livewell Recirculation System
- Livewell Pump Out System
- 1100 GPH Auto Bilge Pump
- Stainless Steel Pull Up Cleats
- Stainless Locking Latches
- Drop In Rear Storage Trays
- Tool Holder in Bow
- Tandem Axle Trailer w/ Disc Brakes
- Gator Hyde Finish
- Aluminum Step Pads
- Custom Aluminum Wheels w/ Radial Tires
- OEM Grade Vault Hybrid Lubrication System
- Swing Tongue
- Matching spare
- LED Trailer Lights





## FEATURES

- All Composite Construction Incl. Transom & Stringers
- Hydraulic Tilt Steering
- Custom Steering Wheel
- 10" Adjustable Jack Plate
- Trim At The Helm
- Hot Foot Throttle W/ Slide
- Lowrance Hook² 5X Flush in Bow
- Lowrance Hook² 5 Flush in Console
- Full Instrumentation
- Passenger Rod Box / Ramp
- Recessed Trolling Motor Foot Pedal
- Auxiliary Power Outlet
- USB Power Outlet
- Passenger Grab Handle & Foot Rest/Brace
- Rod Buckles
- Snake Light
- LED Courtesy Lights
- Port Side Rod Organizer
- 1 Fold Down Seat / 1 Bike Seat & Power Pro Pole
- Under Seat Net Storage
- Custom Cover
- LED Navigation Lights
- LED Compartment Lights
- Stainless Steel Lid Assist
- Minn Kota Max 70 SC 24v
- 2 x 10 Battery Charger
- Console Storage Box with cup holders
- LED Livewell Lights
- Livewell Recirculation System
- Livewell Pump Out System
- 1100 GPH Auto Bilge Pump
- Stainless Steel Pull Up Cleats
- Stainless Locking Latches
- Drop In Rear Storage Trays
- Tool Holder in Bow
- Single Axle Trailer w/ Disc Brakes
- Gator Hyde Finish
- Aluminum Step Pads
- Custom Aluminum Wheels w/ Radial Tires
- OEM Grade Vault Hybrid Lubrication System
- Swing Tongue
- Matching spare
- LED Trailer Lights



# 618 PRO

LENGTH 18' 6" | BEAM 94" | FUEL CAPACITY 36 GAL.  
MAX HP 150-175 HP | WEIGHT (APPROX) 1500 LBS. | LIVEWELL CAP 34 GAL.

## REDEFINING THE WORLD STANDARD...

*If you are looking for an 18' 6" boat that has all the standard features of a 21' boat, look no further. Standard with the totally enclosed driver console, under-seat net storage and buddy rod locker, the 618 Pro gives you more bang for your buck than its competition. The knit type construction is the same as all boats that we build. Once you add in the same stainless latches and fittings, it becomes clear that you will not find a better boat for your dollar. Fishability in all areas. The net storage under the seat and buddy rod locker helps keep the cockpit area organized for today's serious angler.*





# BUILD YOUR PHOENIX BOATS

LOWRANCE	600 / 819 PRO	721 PRO XP	919 PRO XP	19 PHX	920 / 921 PRO XP	20 / 21 PHX
Lowrance HOOK <sup>2</sup> 5X Splitshot at Bow	S					
Lowrance HOOK <sup>2</sup> 5 Splitshot at Console	S					
Lowrance HOOK <sup>2</sup> 5 Splitshot at Bow	•					
Lowrance HOOK <sup>2</sup> 7 Splitshot at Console	•	S				
Lowrance HOOK <sup>2</sup> 7 Splitshot at Bow	•	S				
Lowrance HOOK <sup>2</sup> 9 Splitshot at Console	•	•				
Lowrance HOOK <sup>2</sup> 9 Splitshot at Bow	•	•				
Lowrance Elite 7 Ti2 at Console	•	•				
Lowrance Elite 7 Ti2 at Bow	•	•				
Lowrance Elite 9 Ti2 at Console	•	•				
Lowrance Elite 9 Ti2 at Bow	•	•				
Lowrance Elite 12 Ti2 at Console	•	•				
Lowrance Elite 12 Ti2 at Bow	•	•	•		•	
Lowrance HDS 7 LIVE at Console	•	•				
Lowrance HDS 7 LIVE at Bow	•	•	S		S	
Lowrance HDS 9 LIVE at Console	•	•	S		S	
Lowrance HDS 9 LIVE at Bow	•	•	•	S	•	S
Lowrance HDS 12 LIVE at Console	•	•	•	S	•	S
Lowrance HDS 12 LIVE at Bow	•	•	•	•	•	•
Lowrance HDS 16 LIVE at Console	•	•	•	•	•	•
Lowrance HDS 16 LIVE at Bow	•	•	•	•	•	•
Lowrance 3D Structure Scan Module	•	•	•	•	•	•
Lowrance Active Imaging 2-in-1 Transducer	•	•	S	S	S	S
Lowrance WM-3 Sirius XM Weather	•	•	•	•	•	•
Lowrance Sonic Hub w/ Bluetooth Adapter	•	•	•	•	•	•
NMEA harness	•	•	S	S	S	S
Ethernet Cable	•	•	S	S	S	S
Point 1 Antenna	•	•	S	S	S	S
Yamaha / Evinrude NMEA 2000 Engine Interface	•	•	•	•	•	•
Lowrance Livewell Temp Probes	•	•	•	•	•	•

HUMMINBIRD	600 / 819 PRO	721 PRO XP	919 PRO XP	19 PHX	920 / 921 PRO XP	20 / 21 PHX
Humminbird G2 Helix 5 Chirp GPS at Bow	•					
Humminbird G2 Helix 5 Chirp DI at Console	•					
Humminbird G2 Helix 5 Chirp DI at Bow	•					
Humminbird G2 Helix 5 Chirp SI at Console	•					
Humminbird G2 Helix 5 Chirp SI at Bow	•					
Humminbird G3N Helix 7 Chirp GPS at Console	•					
Humminbird G3N Helix 7 Chirp GPS at Bow	•	•	•		•	
Humminbird G3N Helix 7 Chirp DI at Console	•	•				

HUMMINBIRD CONTINUED	600 / 819 PRO	721 PRO XP	919 PRO XP	19 PHX	920 / 921 PRO XP	20 / 21 PHX
Humminbird G3N Helix 7 Chirp DI at Bow	•	•	•		•	
Humminbird G3N Helix 7 Chirp SI at Console	•	•	•		•	
Humminbird G3N Helix 7 Chirp SI at Bow	•	•	•		•	
Humminbird G3N Helix 8 Chirp GPS at Console	•	•	•		•	
Humminbird G3N Helix 8 Chirp GPS at Bow	•	•	•		•	
Humminbird G3N Helix 8 Chirp DI at Console	•	•	•		•	
Humminbird G3N Helix 8 Chirp DI at Bow	•	•	•		•	
Humminbird G3N Helix 8 Chirp SI at Console	•	•	•		•	
Humminbird G3N Helix 8 Chirp SI at Bow	•	•	•		•	
Humminbird G3N Helix 9 Chirp GPS at Console	•	•	•		•	
Humminbird G3N Helix 9 Chirp GPS at Bow	•	•	•	•	•	•
Humminbird G3N Helix 9 Chirp MEGA DI at Console	•	•	•	•	•	•
Humminbird G3N Helix 9 Chirp MEGA DI at Bow	•	•	•	•	•	•
Humminbird G3N Helix 9 Chirp MEGA SI at Console	•	•	•	•	•	•
Humminbird G3N Helix 9 Chirp MEGA SI at Bow	•	•	•	•	•	•
Humminbird G3N Helix 10 Chirp GPS at Console	•	•	•	•	•	•
Humminbird G3N Helix 10 Chirp GPS at Bow	•	•	•	•	•	•
Humminbird G3N Helix 10 Chirp MEGA DI at Console	•	•	•	•	•	•
Humminbird G3N Helix 10 Chirp MEGA DI at Bow	•	•	•	•	•	•
Humminbird G3N Helix 10 Chirp MEGA SI at Console	•	•	•	•	•	•
Humminbird G3N Helix 10 Chirp MEGA SI at Bow	•	•	•	•	•	•
Humminbird G3N Helix 12 Chirp GPS at Console	•	•	•	•	•	•
Humminbird G3N Helix 12 Chirp GPS at Bow	•	•	•	•	•	•
Humminbird G3N Helix 12 Chirp MEGA DI at Console	•	•	•	•	•	•
Humminbird G3N Helix 12 Chirp MEGA DI at Bow	•	•	•	•	•	•
Humminbird G3N Helix 12 Chirp MEGA SI at Console	•	•	•	•	•	•
Humminbird G3N Helix 12 Chirp MEGA SI at Bow	•	•	•	•	•	•
Humminbird SOLIX G2 10 Chirp MEGA SI GPS at Console	•	•	•	•	•	•
Humminbird SOLIX G2 10 Chirp MEGA SI GPS at Bow	•	•	•	•	•	•
Humminbird SOLIX G2 12 Chirp MEGA SI GPS at Console	•	•	•	•	•	•
Humminbird SOLIX G2 12 Chirp MEGA SI GPS at Bow	•	•	•	•	•	•
Humminbird SOLIX G2 15 Chirp MEGA SI GPS at Console	•	•	•	•	•	•
Humminbird SOLIX G2 15 Chirp MEGA SI GPS at Bow	•	•	•	•	•	•
Humminbird Solix G2 MEGA DI Trolling Motor Transducer	•	•	•	•	•	•
Humminbird Solix G2 MEGA DI Transom Mount Transducer	•	•	•	•	•	•
Humminbird 360 Bow Mount	•	•	•	•	•	•
Humminbird 360 Transom Mount	•	•	•	•	•	•
Humminbird AS GPS HS	•	•	•	•	•	•
Ethernet Expansion AS ETH5PXG	•	•	•	•	•	•
Ethernet Link Cable w/ adapter	•	•	•	•	•	•



GARMIN	800/180 PRO	720 PRO-XP	800 PRO-XP	18 PHX	820/820 PRO-XP	820/21 PHX
Garmin ECHOMAP Plus 73sv at Console	•	•				
Garmin ECHOMAP Plus 73sv at Bow	•	•				
Garmin ECHOMAP Plus 93sv at Console	•	•	•		•	
Garmin ECHOMAP Plus 93sv at Bow	•	•	•		•	
Garmin GPSMAP 1042 XSV at Console	•	•	•	•	•	•
Garmin GPSMAP 1042 XSV at Bow	•	•	•	•	•	•
Garmin GPSMAP 1242 XSV at Console	•	•	•	•	•	•
Garmin GPSMAP 1242 XSV at Bow	•	•	•	•	•	•
Garmin GPSMAP 7607 XSV at Console	•	•				
Garmin GPSMAP 7607 XSV at Bow	•	•	•		•	
Garmin GPSMAP 7608 XS at Console	•	•	•	•	•	•
Garmin GPSMAP 7608 XSV at Bow	•	•	•	•	•	•
Garmin GPSMAP 7610 XSV at Console	•	•	•	•	•	•
Garmin GPSMAP 7610 XSV at Bow	•	•	•	•	•	•
Garmin GPSMAP 7612 XSV at Console	•	•	•	•	•	•
Garmin GPSMAP 7612 XSV at Bow	•	•	•	•	•	•
Garmin GPSMAP 7616 XSV at Console	•	•	•	•	•	•
Garmin GPSMAP 7616 XSV at Bow	•	•	•	•	•	•
Garmin Livescope Forward Transducer	•	•	•	•	•	•
Garmin Ethernet Cable	•	•	•	•	•	•
Garmin NMEA Harness	•	•	•	•	•	•

MOTOR-GUIDE						
Motor Guide X3 70 45" 24V	•					
Motor Guide X5 80 45" 24V	•	•	•	•		
Motor Guide X5 80 SONAR 45" 24V	•	•	•	•		
Motor Guide X5 80 50" 24V	•	•	•	•		
Motor Guide X5 80 SONAR 50" 24V	•	•	•	•		
Motor Guide X5 105 45" 36V	•	•	•	•	•	•
Motor Guide X5 105 SONAR 45" 36V	•	•	•	•	•	•
Motor Guide X5 105 50" 36V	•	•	•	•	•	•
Motor Guide X5 105 SONAR 50" 36V	•	•	•	•	•	•

MINN KOTA	800/180 PRO	720 PRO-XP	800 PRO-XP	18 PHX	820/820 PRO-XP	820/21 PHX
Minn Kota Max 70 SC 24V	S					
Minn Kota Max 70 24V	•					
Minn Kota Fortrex 80 24v 45"	•	S	S	S		
Minn Kota Fortrex 80 24v 45" US	•	•	•	•		
Minn Kota Fortrex 80 24v 52"	•	•	•	•		
Minn Kota Fortrex 80 24v 52" US	•	•	•	•		
Minn Kota Fortrex 112 36v 45"	•	•	•	•	S	S
Minn Kota Fortrex 112 36v 45" US	•	•	•	•	•	•
Minn Kota Fortrex 112 36v 52"	•	•	•	•	•	•
Minn Kota Fortrex 112 36v 52" US	•	•	•	•	•	•
Minn Kota Ultrex 80 24v 45"	•	•	•	•		
Minn Kota Ultrex 80 24v 52"	•	•	•	•		
Minn Kota Ultrex 112 36v 45"	•	•	•	•	•	•
Minn Kota Ultrex 112 36v 52"	•	•	•	•	•	•
Minn Kota Ultrex 80 24v 45" Link	•	•	•	•		
Minn Kota Ultrex 80 24v 52" Link	•	•	•	•		
Minn Kota Ultrex 112 36v 45" Link	•	•	•	•	•	•
Minn Kota Ultrex 112 36v 52" Link	•	•	•	•	•	•
Minn Kota Ultrex 80 24v 45" MDI	•	•	•	•		
Minn Kota Ultrex 80 24v 52" MDI	•	•	•	•		
Minn Kota Ultrex 112 36v 45" MDI	•	•	•	•	•	•
Minn Kota Ultrex 112 36v 52" MDI	•	•	•	•	•	•
Minn Kota Ultrex 80 24v 45" Link MDI	•	•	•	•		
Minn Kota Ultrex 80 24v 52" Link MDI	•	•	•	•		
Minn Kota Ultrex 112 36v 45" Link MDI	•	•	•	•	•	•
Minn Kota Ultrex 112 36v 52" Link MDI	•	•	•	•	•	•



Dual Unit Dash Mount Shroud



Dual Stacked Bow Mount Shroud



# BUILD YOUR PHOENIX BOATS

ELECTRONICS	618/819 PRO	721 PRO XP	819 PRO XP	119 PHX	920/821 PRO XP	20/21 PHX
Ram Mount	•	•	•	•	•	•
Dual Unit Dash Mount Shroud	•	•	•	•	•	•
Stacked Bow Mount Shroud (21PHX, 20PHX, 19PHX, 721 Pro XP)		•		•		•
Gimbal Mount for Dash	•	•	•	•	•	•
Removable Gimbal Mount over TM Recess	•		•		•	
Gimbal Mount on Bow Shroud	•	•	•	•	•	•
Transducer shield Mounting Bracket	•	•	•	•	•	•

BATTERY CHARGERS						
<b>MINN KOTA</b>						
MK 220	•					
MK 330	•	•	•	•		
MK 330 PC	•	•	•	•		
MK 460 PC	•	•	•	•	•	•
<b>DUAL PRO CHARGING SYSTEMS</b>						
Sportsman Series 2 x 10 Amp	S					
Sportsman Series 3 x 10 Amp	•	S	S	S		
Sportsman Series 4 x 10 Amp	•	•	•	•	S	S
Professional Series 3 x 15 Amp	•	•	•	•		
Professional Series 4 x 15 Amp	•	•	•	•	•	•
3612 Piggyback Removable Charging System	•	•	•	•	•	•

POWER POLES						
Blade Series 8' Power Pole Black / Silver / Blue / Red / White / Lime	•	•	•	•	•	•
Blade Series 10' Power Pole Black / Silver / Blue / Red / White / Lime	•	•	•	•	•	•
Wireless Bow Foot Switch	•	•	•	•	•	•
Travel Cover for 8' Power Pole	•	•	•	•	•	•

TALON SHALLOW WATER ANCHOR						
8' Talon in Red, Blue, Black, Silver, and White	•	•	•	•	•	•
10' Talon in Red, Blue, Black, Silver, and White	•	•	•	•	•	•
12' Talon in Red, Blue, Black, Silver, and White	•	•	•	•	•	•
Talon Jackplate Adapter Bracket	•	•	•	•	•	•
Talon Tilt Bracket	•	•	•	•	•	•
Talon Wireless Foot Switch	•	•	•	•	•	•
Dual Talon Lanyard Style Remote	•	•	•	•	•	•
Cover for 8' Talon	•	•	•	•	•	•
Cover for 10' and 12' Talon	•	•	•	•	•	•

UPHOLSTERY	618/819 PRO	721 PRO XP	819 PRO XP	119 PHX	920/821 PRO XP	20/21 PHX
Bike Seat/Pro Pole for Fold Seat	•	•	•	•	•	•
Fold Seat for Bike Seat/Pro Pole	•	•	•	•	•	•
Extra Bike Seat and Pro Pole	•	•	•	•	•	•
Extra Fold Seat	•	•	•	•	•	•
Bench Seat Center Section	•	•	•	•	•	•
Dual Elevation Drivers Seat	•	•	•	•	•	•

JACK PLATES						
TH Atlas Hydraulic Jack Plate	•	•	•	•	•	•
TH Black Atlas Hydraulic Jack Plate	•	•	•	•	•	•
TH Atlas Hydraulic Jack Plate Digital Gauge	•	•	•	•	•	•
TH Atlas Manual Jack Plate	•	•	•	•	•	•

PROPELLERS						
Mercury Stainless Steel Propellers	•	•	•	•	•	•
Yamaha Stainless Steel Propellers	•	•	•	•	•	•
Evinrude Stainless Steel Propellers	•	•	•	•	•	•

MISCELLANEOUS OPTIONS						
Extra Seat Base in Cockpit Floor	•	•	•	•	•	•
Console Hardware Kit	•	•	•	•	•	•
Removable Dual Console	•	•	•	•	•	•
TH Two Way Boat Alarm	•	•	•	•	•	•
Hydrowave H2	•	•	•	•	•	•
Mercury Smartcraft Gauge	•	•	•	•	•	•
Mercury Merc Monitor System	•	•	•	•	•	•
Mercury SC 1000 Digital Gauge Package	•	•	•	•	•	•
Yamaha Digital Gauge Package	•	•	•	•	•	•
Oxygen Innovations Livewell System	•	•	•	•	•	•
Pro Tech Padded Front Deck	•	•	•	S	•	S
Pro Tech Padded Cooler Lid	•	•	•	•	•	•
Rod Locker Bar With Alarm lock	•	•	•	•	•	•
Starboard Side Rod Organizer	•	•	•	•	•	•
Custom Fit Landing Net w/ Extra Long Handle	•	•	•	•	•	•
Fusion Bluetooth Stereo w/ 2 speakers	•	•	•	•	•	•
Additional Bilge Pump	•	•	S	S	S	S
Phoenix Integrated Wiring System	•	•	S	S	S	S
Phoenix Culling System	•	•	S	S	S	S
Phoenix AIR Circulation System	•	•	•	•	•	•
Phoenix Carpet Decal Kit	•	•	•	•	•	•
Stainless Phoenix Package	•	•	S	S	S	S
Phoenix Logo Tackle Storage Kit	•	•	•	•	•	•
RIGID Deck Lighting Kit	•	•	•	•	•	•



## VELOCITY

Wheel Upgrade



## TURISMO

Wheel Upgrade



## WARRIOR

Wheel Upgrade



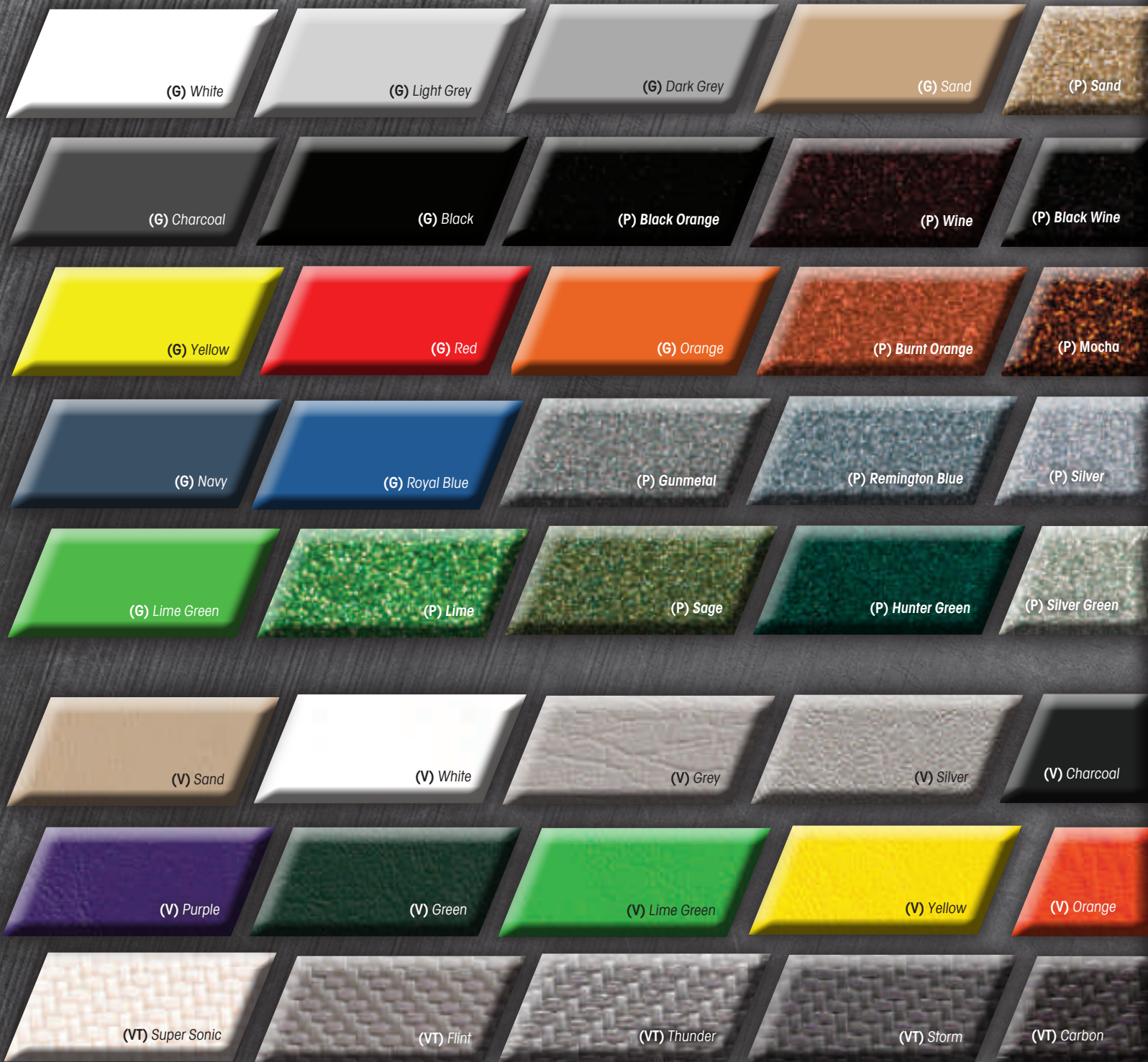
TRAILER OPTIONS	619/819 PRO	721 PRO-XR	919 PRO-XR	19 PHX	920/925 PRO-XR	20/22 PHX
Spare Aluminum Wheel w/ Radial Tire	S	S	S	S	S	S
A 162 Aluminum Wheel w/ Black Lug Nuts	S	S	S	S	S	S
Velocity Wheel Upgrade	•	•	•	•	•	•
Turismo Wheel Upgrade	•	•	•	•	•	•
Warrior Wheel Package	•	•	•	•	•	•
Disc Brakes On Rear Axle	S	S	S	S	S	S
Channel Frame Upgrade	•	•	•	•	•	•
Galvanized Frame	•	•	•	•	•	•
Aluminum Trailer Upgrade	•	•	•	•	•	•
Tandem Axle Upgrade / STD on 819	•	S	S	S	S	S
Swing Tongue	S	S	S	S	S	S
Phoenix Lazer Cut Step Pads	•	S	S	S	S	S
Bow Steps	•	S	S	S	S	S
Trick Step Bow Step	•	•	•	•	•	•
Extra Large Bow step on Starboard Side Only	•	•	•	•	•	•
Swing Out Spare Tire Carrier Mount	•	•	•	•	•	•
Ratchet Tie Downs	•	S	S	S	S	S
Fiberglass Fender Upgrade	•	•	•	•	•	•
Stainless Steel Fenders (Warrior)	•	•	•	•	•	•
Stainless Steel Fenders (Tandem)	•	•	•	•	•	•
Stainless Steel Fenders (Single) / N/A on 819	•					
Dual Disc Upgrade	•	•	•	•	•	•
Gator Hyde Coating (Black)	S	S	S	S	S	S
Paint on top of Gator Hyde Finish	•	•	•	•	•	•
Trailer Shocks (Tandem)	•	•	•	•	•	•
Trailer Shocks (Single) / N/A on 819	•					
Rigid Backup Light Kit	•	•	•	•	•	•
Fulton F2 Jack and Winch Upgrade	•	•	S	S	S	S



Trick Step Bow Step



# BUILD YOUR **PHOENIX** BOATS







G - GEL COAT | P - POLYFLAKE | C - CARPET | V - VINYL | VT - TEXTURED VINYL

## CARPET

(C) Ash

(C) Grey

(C) Sand



BUILD YOUR PHOENIX ON LINE @ [PHOENIXBASSBOATS.COM](http://PHOENIXBASSBOATS.COM)





For more information on our First Flight Reward program  
visit [www.phoenixfirstflight.com](http://www.phoenixfirstflight.com).

© 2019 Copyright Phoenix Boats® Phoenix Boats® may introduce new colors, fabrics, styling and options throughout the year.  
Specifications and models shown are subject to change without notice. Some boats in this catalog contain optional equipment.

730 Industrial Drive, Winchester, TN 37398 | 931.967.7210 | [www.phoenixbassboats.com](http://www.phoenixbassboats.com)