



Boat Owners Manual

Notice: Seven very important things to do now!

- Read your owner's manual and all other literature that accompanies your boat.
- Acquire necessary and recommended safety equipment.
- Comply with all state and federal registration requirements.
- Know your boat; become familiar with all features on the boat.
- Take advantage of boating education and safety courses and publications.
- Read and understand the Phoenix Limited Warranty.
- Make sure you and your dealer have filled out and mailed your Warranty Card.



WARNING: Engine exhaust, some of its constituents and a wide variety of components contain or emit chemicals known to the State of California to cause cancer and birth defects and other reproductive harm. In addition, oils, fuels and fluids contained in boats as well as waste produced by component wear contain or emit chemicals known to the State of California to cause cancer and birth defects or other reproductive harm.

Battery posts, terminals and related accessories contain lead and lead compounds. Wash your hands after handling. Used engine oil contains chemicals that have caused cancer in laboratory animals. Always protect your skin by washing thoroughly with soap and water.



CONGRATULATIONS on the purchase of your new boat.

Your admiration and respect for your new Phoenix boat® will be enhanced if you follow the recommendations in this Owner's Manual. Other handbooks and written directions pertaining to the operation of your boat can be found in the owner's packet. They will help guide you toward years of trouble free boating if you will take the time to read this material.

This manual has been compiled to help you operate your boat with safety and pleasure. It contains details of the boat; the equipment supplied or fitted, its systems, and information on its operations and maintenance. Please read it carefully and familiarize yourself with the craft before using it.

If this is your first boat, or if you are changing to a type of boat you are not familiar with, for your own comfort and safety, please ensure that you obtain handling and operating experience before "assuming command" of the boat. Your dealer will be pleased to advise you of local boating schools or competent instructors.

PLEASE KEEP THIS MANUAL IN A SECURE PLACE, AND HAND IT OVER TO THE NEW OWNER WHEN YOU SELL THE BOAT.

Because of our policy of continuous product improvement, the illustrations used in this manual may not be the same as your boat and are intended as representative reference views. Some controls, indicators, or information may be optional features and equipment, consult your local Phoenix dealer.

WARRANTY

The Limited Warranty for your Phoenix boat® will be delivered to you by your dealer. Please read it carefully. The warranty becomes effective upon the date of purchase, but the warranty registration form must be completed, signed, and returned to Phoenix boat® within 30 days of sale in order to obtain any warranty coverage. When you sign the warranty registration form, you are stating that you understand the terms and conditions within the warranty. Phoenix Boats® provides no other warranty for your boat. If you have any questions, please discuss them with your dealer or get in touch with our Customer Service Department. Failure to follow warranty instructions will void your warranty. If you have purchased your Phoenix boat outside of North America, please ask your dealer to provide and explain the Phoenix Boats® International Warranty policy.

PHOENIX® BOATS LIMITED WARRANTY **(FIBERGLASS BOATS)**

Phoenix Boats® (“Phoenix®”), warrants to you, the first North American retail purchaser of this model year boat delivered by a factory authorized dealer, that it will repair or replace defects in materials or workmanship it finds to its satisfaction to occur within the applicable warranty periods, subject to the “What This Warranty Does Not Cover” section below. The applicable Warranty Period runs from the date of delivery to the first retail customer provided that the boat is delivered within twelve (12) months after the date of manufacture. For boats delivered more than twelve (12) months after the date of manufacture, coverage will run from the date of manufacture and the first retail purchaser will be entitled to the coverage remaining under the warranty periods. All warranties run concurrently.

A. WHO GIVES THE WARRANTY?

Phoenix Boats®, 730 Industrial Drive, Winchester, TN 37398.

B. WHO IS ENTITLED TO THE WARRANTY?

1. Original Owner. This warranty is extended to the original, retail, non-commercial; individual purchaser located within the United States (“Original Owner”) and only applies to boats sold through an authorized Phoenix Boats® dealer. The warranty commences on the date the Original Owner purchased the boat (“Purchase Date”).
2. Transfer Owner. This warranty may be transferred once to a second non-commercial, individual owner, located within the United States (“Transfer Owner”), for any warranty properly obtained by the Original owner for the period that may be left on applicable warranty term dating from the Purchase Date.

(Original Owner and Transfer Owner are collectively referred to herein as “Owner”).

C. WHAT MUST BE DONE TO ACTIVATE THE WARRANTY?

1. Original Owner. The Original Owner and dealer must fill out the warranty form supplied with the boat and return it to Phoenix Boats® within thirty (30) days from the Purchase Date for the warranty to be effective. This warranty will only become effective upon receipt of a properly completed warranty registration card by Phoenix Boats® at its main office.
2. Transfer Owner. Any Transfer Owner must obtain a transfer form from an authorized current Phoenix Boats® dealer and pay a One Hundred and Fifty Dollars (\$150) transfer charge. To be effective, the properly completed warranty transfer form, along with the transfer fee, must be returned to and received by Phoenix Boats® at its main office. Any transfer must be completed within the first five (5) years following the Purchase Date.

D. WHAT COMPONENTS ARE COVERED UNDER THIS WARRANTY?

Phoenix Boats® warrants that each of the components of its Phoenix Boats® boats designated below will be free from defects in material and workmanship for the applicable warranty period, as long as the boat is used under normal, non-commercial, operation conditions and in compliance with all applicable laws and regulations. Phoenix Boats® will at its option repair or replace parts covered under this warranty that are found to be defective in original material or workmanship, which will be Phoenix Boats®'s sole obligation with respect to such defective parts or products.

The following components are structurally warranted to the Original Owner for the lifetime of the boat (these items are also warranted to a Transfer Owner for a Period of ten (10) years from the Purchase Date):

- **HULL**
- **STRINGER**
- **TRANSOM**

The following factory installed parts and components are warranted for defects to the Owner for three (3) years from the Purchase Date:

- Steering helm, cylinder, hoses and cables.
- Aeration pumps, valves and timer.
- Boat electrical system.
- Seat pedestals.
- Factory installed gauges.
- Deck hardware such as locks, cleats, and fasteners.

E. WHAT IS NOT COVERED UNDER THIS WARRANTY?

The following is not covered under this warranty.

- Windshield breakage, or leaks around windshields and hatches.
- Damage, failure or other problems with the boat's finish such as cracks, crazing, fading in color, chalking, or blistering.
- Damage, fading, or failure of upholstery, carpet and any other soft goods.
- Installation of engines or other accessories not performed by Phoenix Boats®.
- Any damage caused by accident, collision, or impact with another object, or resulting from alterations, abuse, commercial or rental use, misuse or negligence of any Phoenix Boats® product. Use of a Phoenix Boats® Boat powered or loaded in excess of maximum limits as stated on the Capacity Plate in each boat is misuse and will void these warranties.

Service

If you have a problem with your new boat or trailer as a result of workmanship or materials, we want to correct it and get it back in service as quickly as possible. Contact the Phoenix Boat dealer from whom you purchased the boat. An authorized dealer must process all warranty repairs. If the dealer fails to remedy the cause of the problem, contact us within 30 days. **It is your responsibility to deliver the boat to the dealer for repair.**

Information about service, replacement parts, or additional equipment is available from your dealer or Phoenix Boats®. You can get in touch with us directly at:

Phoenix Boats
730 Industrial Drive
Winchester, TN 37398
Phone: 931-967-7210 or
www.phoenixbassboats.com

RESPONSIBILITIES

Boat Owner

You should inspect the boat at time of delivery to verify that all systems and components are operating safely and acceptably. We recommend that you refer to the engine warranty certificate for initial inspection and service requirements. Be sure to review the pre-delivery checklist for the boat and engine with your dealer when you take delivery.

You will also need to record all-important information about your boat and its major components on the Boat Data Sheet. (You will find the Boat Data Sheet located within this manual.) After all the data has been entered, make a photocopy and store at home or another safe place.

You are responsible for the following proper procedures during the break-in period. Check with your dealer if you have any questions. You should also schedule the 20-hour checkup with your dealer. At the 20-hour checkup, your dealer should perform an engine check according to recommended procedures as stated by the engine manufacturer in the engine owner's manual.

The operator is also responsible for complying with the following procedures and operational requirements:

- Registering the boat with appropriate jurisdiction.
- Safety training of passengers and crew.
- Ensuring the boat's continued safe operation through proper maintenance and repair.
- Obtaining adequate insurance coverage.
- Following safe operation practices at all times.
- Learning the Rules and Regulations of water safety.
- Developing an understanding of the boat system.
- Operating and maintaining all equipment in compliance with manufacturer's instructions.
- Avoiding the use of drugs and alcohol.
- Complying with environmental regulations.

Along with boating comes the responsibility of complying with environmental regulations. Please think about the future of our waterways, oceans, and marine life while you're out enjoying them – and take all necessary measures to help protect our natural habitats. Keeping our waterways and marine habitats free from debris, and showing consideration for the creatures that thrive in these environments are some ways you can help assure the pleasure of boating for years to come.

SERVICE / MAINTENANCE LOG

[illegible]

It is also the owner's responsibility to periodically check screws and bolts of the vessel to ensure proper tightness. Also to check fluids such as hydraulic steering, brake fluid and greasing fitting on the vessel.

HOW TO READ YOUR HULL I.D PLATE

Your I.D. plate is located on the outboard side of the starboard transom, above the waterline. The hull I.D. (serial number) should be included in any inquiries or when ordering parts. The U.S.C.G requires that your H.I.D be permanently affixed on the starboard transom of boat.

Model Year

C J J P 9 2 3 4 E 0 1 1

Month / Year Manufactured

“E” in the year manufactured bracket above stands for May... as “A” thru “L” stands for January to December.

Boat, Engine and Trailer Data

Owner_____

Date Purchased_____

Address_____

Dealer_____

Phone_____

Boat Model_____

Serial Number_____

Engine Model_____

Serial Number_____

Trailer_____

Serial Number_____

Other_____

TRAILERING

A correctly selected trailer supports the boat properly, makes towing safer, and makes loading and unloading easier. Improper trailering can cause serious traffic accidents and is one of the major causes of boat damage. The warranty does not cover damage of this type. Familiarize yourself with proper towing procedures before towing your boat on the road.

IMPORTANT: Your boat's trailer was specifically designed to properly transport your boat. Do not use any other trailer with your boat. Your dealer can help you with the proper tow vehicle connections. Check with the state Department of Motor Vehicles for registration and licensing regulations in your state. Some states require that boat trailers be registered and licensed. Some states also have brake requirements of which you should be aware.



Overloading trailer can lead to frame or component failure of loss of tow vehicle control. To prevent accidents and injury, total weight of trailer, boat, and gear must not exceed trailer weight rating.

Overloading can cause hitch failure and lead to injury-causing accidents. Total weight of the loaded trailer must not exceed capacity marker on hitch of tow vehicle.



ELECTRICAL SYSTEM

This section of the manual includes information about your boat's electrical system. Your boat is designed with a safe electrical system to protect you from hazardous shocks and was checked carefully before it was shipped to your dealer. To protect your self from electric shock, always have a qualified technician make any modifications to the system. If you have questions, see your dealer for more information.

12-VOLT DC BOAT SYSTEM

The 12-Volt D.C. electrical system is a 12-Volt, 2-wire, negative ground type. The hot wire is positive, feeding the lights and appliances for instance, and the negative return is by an insulated wire to the negative terminal of the battery.

24-VOLT TROLLING MOTOR SYSTEM

The 24-Volt D.C. electrical system is a 24-Volt, 2-wire, negative ground type. The hot wire is 24-Volt, feeding the trolling motor, and the negative return is by an insulated wire to the negative terminal of the batteries.

IMPORTANT: Turning the ignition switch off does not cut off power to all components. Powered components, such as the stereo, can draw down the battery if they are left on for an extended period without running the engine. A power switch, which can shut off these components, is standard on some models.

The electrical system is wired at the factory to handle factory-installed electrical equipment. It is recommended that you have your dealer install any additional equipment. An error in wiring the electrical circuits can cause a fire or damage electrical system components. Have your dealer repair the electrical system and install additional equipment.



Fire or Explosion Hazard! Electrical system parts are designed and manufactured to comply with regulations to minimize risks of fire or explosion. **Never substitute automotive parts for marine parts.** Automotive parts do not provide the necessary ignition spark protection.

If you do add additional equipment, it must be adaptable to the negative ground system. When installing additional equipment, be sure to take the power supply from the circuit breaker panel. If additional circuit protection is required, it must be added at the fuse block. Be sure to protect all electrical components from rain, water, or sea spray.

Note: Power feeds for accessory equipment must NOT be taken from the voltmeter terminals. Consult with your dealer for additional DC power needs.

Battery



Poison! Sulfuric acid in batteries can cause severe burns. Avoid contact with skin, eyes, or clothing. Wear goggles, rubber gloves, and protective apron when working with batteries. In case of skin contact, flush with water at least 15 minutes. If swallowed, drink large quantities of water or milk. Follow with Milk Magnesia, beaten egg, or vegetable oil. Get medical attention immediately.



WARNING

Fire or Explosion Hazard! Only qualified personnel should install batteries and perform electrical system maintenance. Do not expose batteries to open flames or sparks. Do not smoke near batteries.

Your dealer has installed a battery or batteries, which supply power to the DC electrical system. Marine batteries provide high reserve capacity plus cold cranking performance. When the engine is running, the engine battery is charged automatically.

Batteries produce hydrogen and oxygen gases when being charged. These explosive gases escape through the vent/fill caps and may form an explosive atmosphere around the battery if ventilation is poor. This gas may remain around the battery for several hours after charging. Sparks or flames can ignite the gas and cause an explosion.

Note: Never disconnect the battery cables while the engine is running. Doing so can damage the electrical system.

WIRING SCHEMATIC

An electrical wiring schematic for your boat is included towards the end of the manual.

BATTERY CHARGING

The engine alternator will recharge the engine battery when the engine is running. On some models a voltage regulator controls the rate of charge by sensing battery voltage and increases or decreases alternator output accordingly. If your boat is equipped with battery charger, please refer to battery charger owner's manual for detailed instructions.



To prevent personal injury, do not attempt to start your engine with jumper cables. The use of jumper cables could create dangerous sparks, which could cause the battery's hydrogen vapors or gasoline fumes to explode.

TROUBLESHOOTING



Electrical Shock! Equipment Damage! Disconnect battery cables before performing all inspections, checks, and repairs to avoid possible personal injury and damage to equipment.



DC Electrical System

Problem	Cause	Solution
No power to 12-V Equipment	Master power switch	Turn switch ON
No Power to T/M	OFF/ or breaker popped	Re-set beaker
	Weak or dead battery	Recharge battery
Battery not charging (engine running)	Engine alternator Malfunction	See dealer
Battery not holding a Charge	Bad battery	Replace battery
12-V device not working	Circuit breaker for Device is OFF	Reset breaker to ON
	Weak or dead battery	Charge battery
	Faulty electrical connection	Check 12-V connections. Tighten or repair as needed

Live-well System

Your Phoenix Livewell system is designed with the serious tournament angler in mind. It is comprised of two independent livewells with three pumps per livewell. There is a fill pump, recirculating pump, and a pumpout pump with manual and auto functions controlled by the switch located on the master switch panel. There is also a dedicated drain line located at the bottom of the livewell with an overflow line located at the top of the livewell.

To use the Phoenix Livewell system, first install the drain plug supplied for each livewell in the fitting located at the bottom of the inside of the livewell. To fill the livewell with water turn on the port or starboard aerator to the manual position and allow each livewell to fill. You may then turn the switch to the auto position and each livewell will fill on a 2 minute on/ 2 minute off cycle. To recirculate the water within the livewell turn the recirc switch to either the auto or manual position and this will bring the water from the bottom of the livewell to the fitting at mid level in the livewell. When you want to cull fish or to drain the livewell turn the pumpout switch to the port, starboard, or both position and the water will be pumped out through the two fittings located on the port rear corner. When through with using the livewells for the day simply pump all water out using the pump system and pull the drain plug. Following these steps should help to ensure your catch is alive and healthy for weigh-in.

Loading Passengers and Gear



Overloading and improper distribution of weight are significant causes of accidents. Do not exceed maximum load stated on capacity plate. For safety, carry a lighter load in rough waters. Distribute the load evenly. Keep the load low.

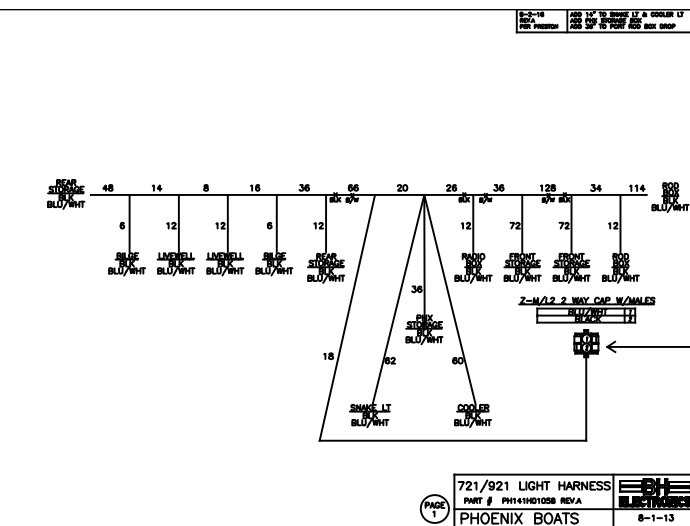
Affixed to your boat is a capacity rating plate showing the boat's maximum load capacity under normal conditions. This plate shows the maximum weight capacity for persons and for gear.

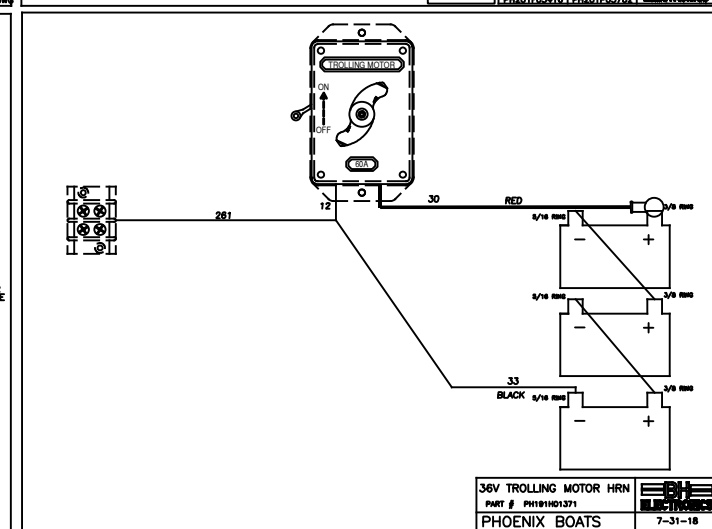
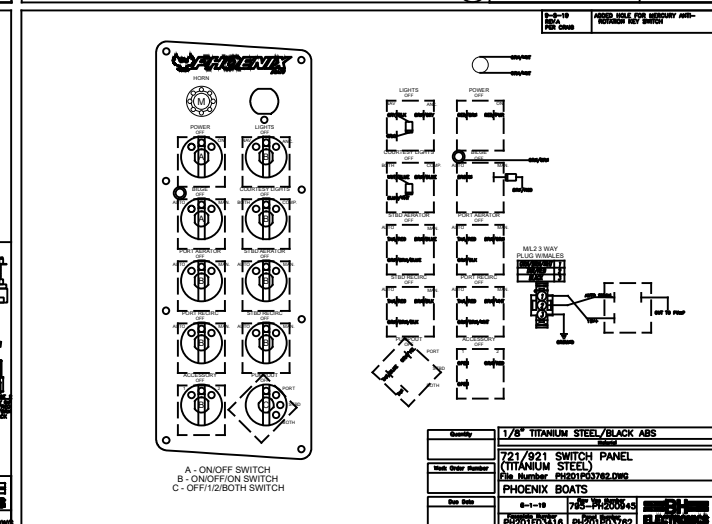
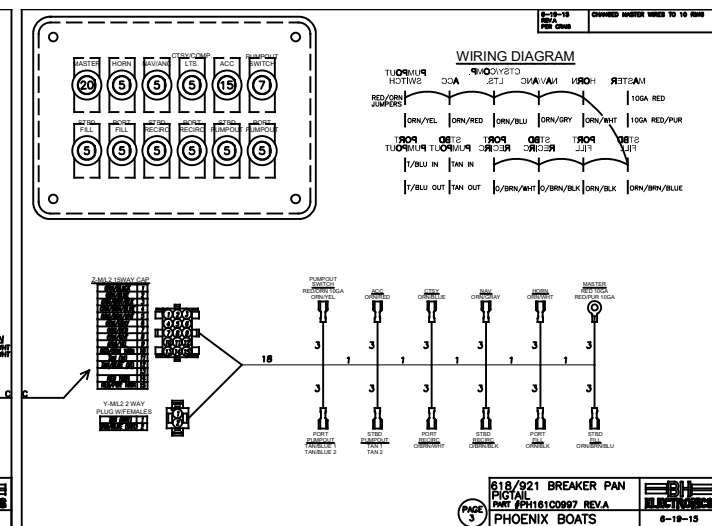
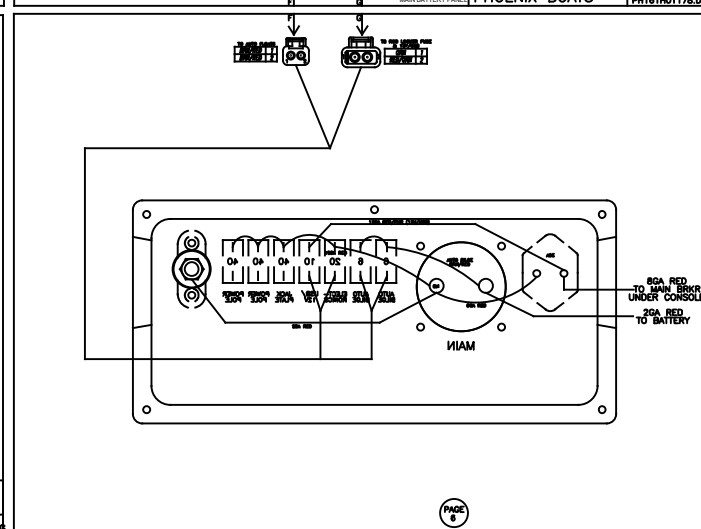
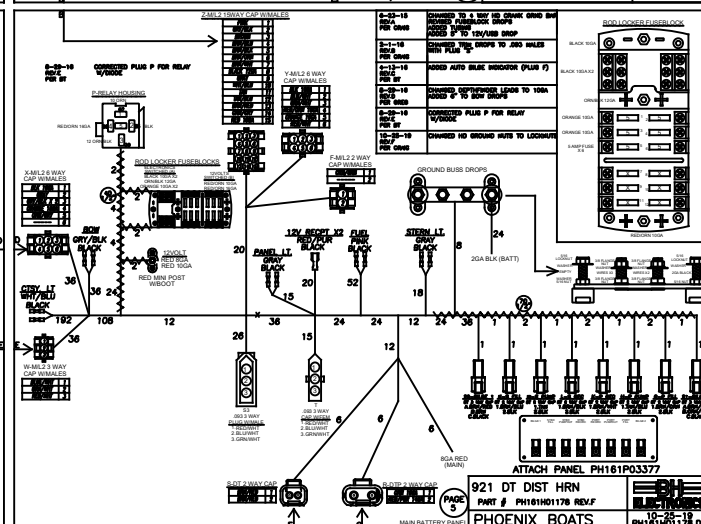
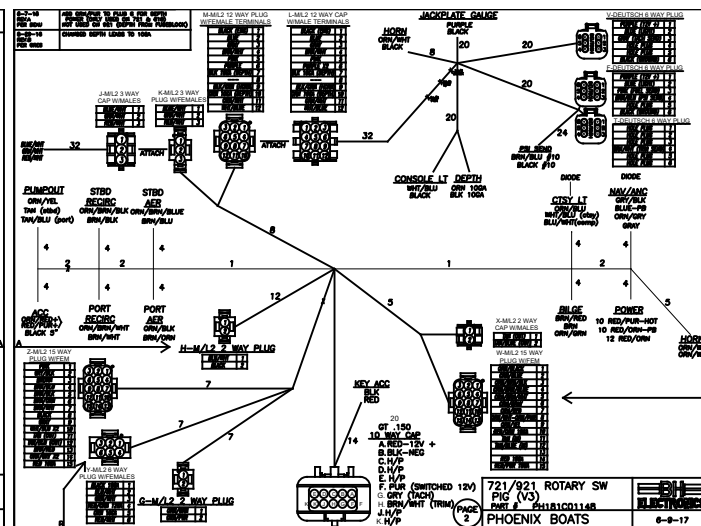
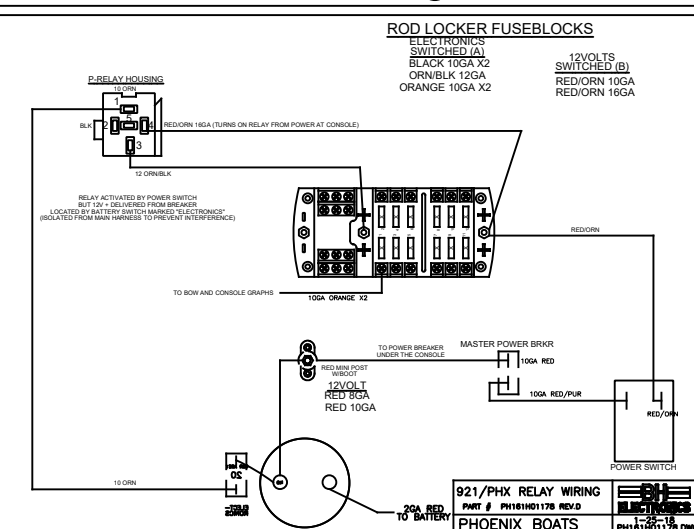
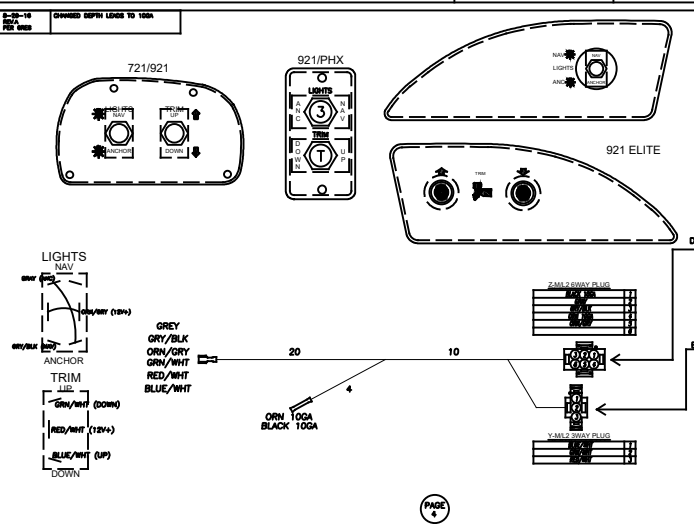
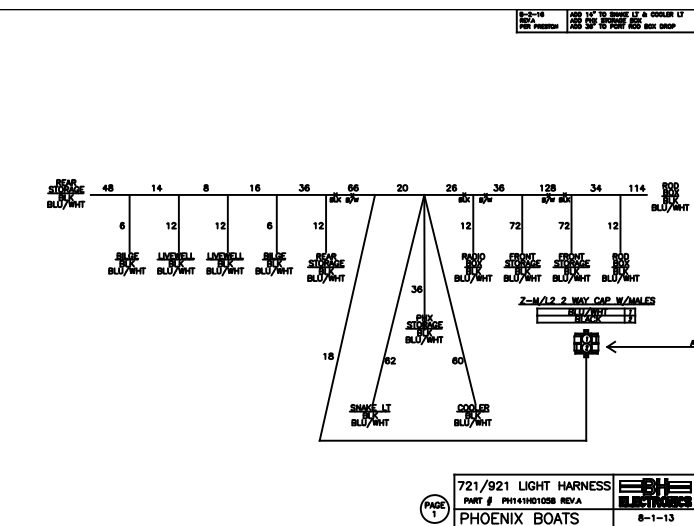
Note: The operator is responsible for using sound judgment when loading the boat. Turbulent waters and adverse weather conditions reduce the maximum load capacity. Carrying the maximum load stated on the capacity plate can be dangerous.

When you are loading gear, have someone on the dock pass gear aboard instead of stepping into and out of the boat. Secure all gear firmly so it doesn't shift or interfere with boat operation. When boarding, passengers should step into the boat one at a time, not jump. Passengers not helping load gear should be seated during loading to maintain even trim. Position tackle gear so that the load is balanced. Do not use swivel seats above trolling speed. Secure unoccupied seats. Observe warning on seat pedestals.



Do not operate the boat on plane with person(s) not properly seated; failure to do so could cause a person(s) to be thrown overboard resulting in injury or death.





Phoenix® Boats
Limited Lifetime Warranty

A. WHO GIVES THE WARRANTY.

Phoenix Boats®, 730 Industrial Drive, Winchester, TN 37398.

B. WHO IS ENTITLED TO THE WARRANTY.

1. **Original Owner.** This warranty is extended to the original, retail, non-commercial, individual purchaser located within the United States ("Original Owner"), and only applies to boats sold through an authorized Phoenix Boats® dealer. The warranty commences on the date the Original Owner purchased the boat ("Purchase Date").

2. **Transfer Owner.** This warranty may be transferred once to a second non-commercial, individual owner, located within the United States ("Transfer Owner"), for any warranty properly obtained by the Original Owner for the period that may be left on the applicable warranty term dating from the Purchase Date.

(Original Owner and Transfer Owner are collectively referred to herein as "Owner").

C. WHAT MUST BE DONE TO ACTIVATE THE WARRANTY.

1. **Original Owner.** The Original Owner and dealer must fill out the warranty form supplied with the boat and return it to Phoenix Boats® within thirty (30) days from the Purchase Date for the warranty to be effective. This warranty will only become effective upon receipt of a properly completed warranty registration card by Phoenix Boats® at its main office.

2. **Transfer Owner.** Any Transfer Owner must obtain a transfer form from an authorized current Phoenix Boats® dealer and pay a One Hundred and Fifty Dollars (\$150) transfer charge. To be effective, the properly completed warranty transfer form, along with the transfer fee, must be returned to and received by Phoenix Boats® at its main office. Any transfer must be completed within the first five (5) years following the Purchase Date.

D. WHAT COMPONENTS ARE COVERED UNDER THIS WARRANTY.

Phoenix Boats® warrants that each of the components of its Phoenix Boats® boats designated below will be free from defects in material and workmanship for the applicable warranty period, as long as the boat is used under normal, non-commercial, operating conditions and in compliance with all applicable laws and regulations. Phoenix Boats® will at its option repair or replace parts covered under this warranty that are found to be defective in original material or workmanship, which will be Phoenix Boats®'s sole obligation with respect to

such defective parts or products.

The following components are structurally warranted to the Original Owner for the lifetime of the boat (these items are also warranted to a Transfer Owner for a period of ten (10) years from the Purchase Date):

- HULL
- STRINGERS
- TRANSOM

The following factory installed parts and components are warranted for defects to the Owner for three (3) years from the Purchase Date:

- Steering helm, cylinder, hoses and cables.
- Aeration pumps, valves and timer.
- Boat electrical system.
- Seat pedestals.
- Fuel tanks.
- Factory installed gauges.
- Deck hardware such as locks, cleats and fasteners.
- Factory installed battery chargers.

E. WHAT IS NOT COVERED UNDER THIS WARRANTY.

The following is not covered under this warranty:

- Windshield breakage, or leaks around windshields and hatches.
- Damage, failure or other problems with the boat's finish such as cracks, craze, fading in color, chalking, or blistering.
- Damage, fading, or failure of upholstery, carpet and any other soft goods.
- Installation of engines or other accessories not performed by Phoenix Boats®.
- Removal and/or de-rigging of engines or accessories.
- Any damage caused by accident, collision, or impact with another object, or resulting from alterations, abuse, commercial or rental use, misuse or negligence of any Phoenix Boats® product. Use of a Phoenix Boats® Boat powered or loaded in excess of maximum limits as stated on the U.S. Coast Guard Capacity Plate in each boat is misuse and will void these warranties.

Phoenix Boats® — Limited Lifetime Warranty — Page 1 of 2

WHITE—DEALER YELLOW—CUSTOMER CARDSTOCK—MANUFACTURER

CJBBB, INC. dba

☐ ORIGINAL ☐ TRANSFER

Phoenix Boats®
WARRANTY REGISTRATION

Customer: _____

Address: _____

City: _____ State: _____ Zip: _____ Phone: (____) _____

Dealer: _____

Model #: _____

Serial #: _____

Date of Purchase: _____

Customer

Dealer

Please complete and mail this form promptly at the time of purchase or transfer to insure proper Warranty Registration.

Phoenix Boats®
Limited Lifetime Warranty

- Damage resulting from racing or use of the boat for speed or endurance contests.
- Damage resulting from failure to perform periodic maintenance in accordance with Phoenix Boats®'s recommendations.
- Damage caused by the use of an improper trailer or mismatching a boat to a trailer or failure to properly secure a boat to trailer or the use of a lower unit support device when trailering.
- Transportation to and from the dealer or factory for warranty repair, including towing expenses, haul-out expense and loading or crane expense.

The following items are not warranted by Phoenix Boats® in any way, although the Original Owner may be entitled to certain warranties from the respective manufacturer of such items.

- Engine, engine controls and harness.
- Trolling motors.
- Battery chargers.
- Navigation equipment.
- Batteries.
- Trailers and trailer accessories.
- Electronics/depth finders.
- Radios/stereos.

F. HOW TO OBTAIN WARRANTY SERVICE.

The Owner must return the boat, including any alleged defective part, to an authorized Phoenix Boats® dealer within the applicable warranty period to obtain warranty service. The Phoenix Boats® dealer will carry out the warranty procedures on the Owner's behalf. All warranty work will be performed at an authorized dealer, at the Phoenix Boats® factory, or at another repair facility that Phoenix Boats® selects. The Owner is solely responsible for the expense associated with transporting the boat to and from the repair facility.

NOTE: For any service sought pursuant to this limited warranty after the first (1st) year after the Purchase Date, the Owner must pay a deductible of Fifty Dollars (\$50) per claim to the servicing dealer for the performance of the warranty work.

GENERAL PROVISIONS AND LIMITATIONS.

1. THE WARRANTY GRANTED HEREIN IS THE EXCLUSIVE REMEDY FOR THE OWNER. PHOENIX BOATS® MAKES NO OTHER WARRANTIES TO THE OWNER, EXPRESS, STATUTORY, IMPLIED OR OTHERWISE. ALL IMPLIED WARRANTIES, INCLUDING WITHOUT LIMITATIONS IMPLIED WARRANTIES OF MERCHANTABILITY AND FITNESS FOR A PARTICULAR PURPOSE, ARE HEREBY DISCLAIMED, AND IF FOR ANY REASON SUCH A DISCLAIMER IS NOT ALLOWED, THEN THE DURATION OF SUCH WARRANTIES IS LIMITED TO THREE (3) YEARS FROM THE PURCHASE DATE.

2. TO THE EXTENT PERMITTED BY LAW, PHOENIX BOATS® SHALL HAVE NO LIABILITY TO THE OWNER OR ANY OTHER PERSON FOR INCIDENTAL, SPECIAL, CONSEQUENTIAL, INDIRECT OR SIMILAR DAMAGES, OF ANY KIND OR NATURE WHATSOEVER, WHETHER ARISING FROM BREACH OF WARRANTY, BREACH OF CONTRACT, NEGLIGENCE, TORT, STATUTE, OR OTHERWISE, EVEN IF PHOENIX BOATS® HAS BEEN ADVISED OF THE POSSIBILITY OR LIKELIHOOD OF SUCH POTENTIAL LOSS, INJURY OR DAMAGE. IN NO EVENT SHALL PHOENIX BOATS® BE RESPONSIBLE OR LIABLE FOR LOSS PROFITS AND/OR WAGES.

3. PHOENIX BOATS®'S SOLE, ONLY AND EXCLUSIVE RESPONSIBILITY IS LIMITED TO REPAIRING OR REPLACING, IN ITS SOLE DISCRETION, ANY DEFECTIVE COMPONENTS COVERED BY THIS WARRANTY DURING THE APPLICABLE WARRANTY PERIOD.

4. Some states do not allow limitations on how long an implied warranty lasts, or do not allow for the exclusion or limitation of incidental or consequential damages, so the above limitations may not apply to you.

5. This warranty gives you specific rights, and you may have other rights, which may vary from state to state.

6. Phoenix Boats® may modify, improve or discontinue the design, specifications or models with respect to any Phoenix Boats® Boat at any time and will not be obligated to make any such changes in any boats previously manufactured.

7. All terms of this warranty are severable and the invalidity or enforceability of any portion hereof shall not effect the validity enforceability of the remaining provisions of this warranty.

8. Any action for breach of warranty shall be barred unless it is commenced within four (4) years from the date the cause of action arises. An action to repair or replace shall be barred unless it is commenced within one (1) year from the date the cause of action accrues regardless of the time remaining in the Warranty Period.

Phoenix Boats®—Limited Lifetime Warranty — Page 2 of 2

Affix
postage

CJBBB, Inc. dba
Phoenix Boats®
730 Industrial Drive
Winchester, TN 37398